

**•STANDALONE DOOR LOCK**  
**•HOTEL DOOR LOCK**







## HOTEL LOCK MANAGEMENT SOFTWARE



**RFID Card Reader - RFID Card Reader (For setting the card with software)**

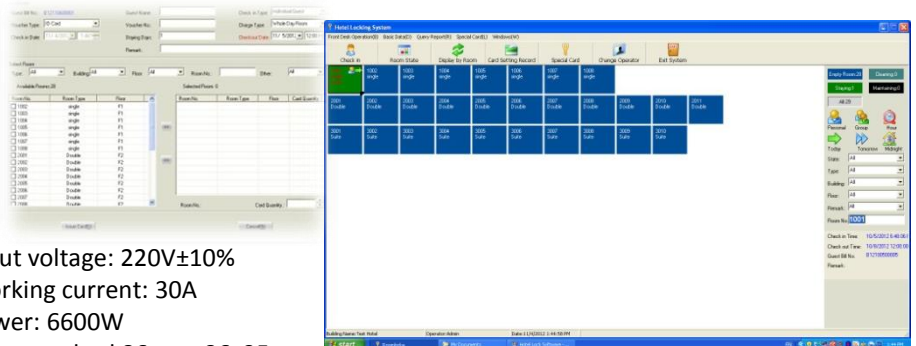
1. Hotel Card Lock Management Software
2. Support SQL database server
3. Personalized interface, convenient for management
4. Different authorized right to different operators
5. Work with RFID Card Reader to issue guest card, room service card, time card, master card and etc.
6. Work with Data Receiver to manage multiple lock control
7. Many types of report
8. Many layer of software user right control

### Hardware Requirement :

Intel Pentium4 1.8GHz above, 512MB RAM, 50GB Harddisk Storage, 1024x768 Resolution



**Data receiver – To upload and download data from multi lock**



1. Input voltage: 220V±10%
2. Working current: 30A
3. Power: 6600W
4. Size: standard 86mm×86x35mm
5. Material: PVC
6. Suitable for application that need to control the power, such like hotel, apartment etc ( 125KHZ card model or any card model)



**Energy Saver switch**

## HOTEL LOCK & STANDALONE DOOR LOCK

**CE certificated Lock** Hotel Lock : GD-HL-RF01 Standalone Door Lock : GD-SDL-EM01

### Manageable By Hotel Lock Management Software (Hotel Lock Only)

1. Practical and tasteful design, obtained 100% independent knowledge property right.
2. Five latches mortise with ANSI standard, individual management. Anti-prizing; prevent poking; solidly durable and safely reliable.
3. RFID(For Hotel Lock only), EM or TEMIC card available to unlock.
4. Lock panel is made from Japanese electrophoresis technique treatment and high-class. Consider the different situation, the core parts of lock is reinforced to prevent the purposive breakage. It has been tested 300 thousand times without malfunction.
5. The faceplate and back plate are made from fine casting without manual work. They are solid and durable to anti-break strongly.
6. The core parts are immersed in 5% brine 500 hours by test without rusting, eroding, staining and fading. Compare the normal finish treatment, PVD finish treatment is more 10 times durable.
7. To prevent purposive breakage, the lock handle is reinforced, and must pass 300 thousand times test. Racing a lock handle to stop destroying violently.
8. Work with alkaline battery, low consumption, long use life for more than 1 year.



**Electrophoresis technique treatment, ANSI 5 latches mortise, Convenient for management**